

-1- PRESENTATION FORM

Name and surname / Name of the group

Ciprian Manda / SILVA ARTIS

City

Bucharest

Country

Romania

Bio

I graduated from the University of Architecture and Urbanism „Ion Mincu”, Bucharest in 2006 as an architect. I started my professional career with the office of Dorin Stefan Architect, where I had to deal with complex but interesting projects, which demanded a lot of detail work and on-site supervision. I launched my own architectural office in 2010 and Silva Artis brand in 2011, as a further exploration of forms and materials.

I like to work with new and old, in order to obtain a certain depthness of space. I combine rough textures and strong colours using precise details.

In the last couple of years I also started to endeavor in product design, mainly in woodworking. I obsess over trying to express the weight and strength of wood, using simple, geometric shapes, counterbalanced by the natural edge of wood. I try to enrich a architectural project with bespoke furniture pieces made in my own shop, which gives me added control over the final result and that makes for a very unique interior space. Thus I complete the circle started with the abstract idea. It ends in a chisel mark.



-2- PRODUCT INFORMATION

Product name 1

TOTEM

Dimensions

60x60x230cm (main body), 140x100x230cm (with legs)

Approximate weight

90 kg

Technical description

A solid oak vertical storage unit, with a lot of different storage options, from drawers arranged in a random fashion, to traps, doors and sliding shelves. The grain of the wood is preserved throughout, meaning that when is closed the object appears as one piece.



Product name 2

Pyramid desk with storage

Dimensions

130x94x75cm

Approximate weight

60kg + 20kg (storage unit)

Technical description

An office desk with a large surface area, which combines solid oak construction with a stainless steel support frame. It also has its own storage unit, which is detached, and which has a dark stain finish.





Product name 3

Banco unum

Dimensions

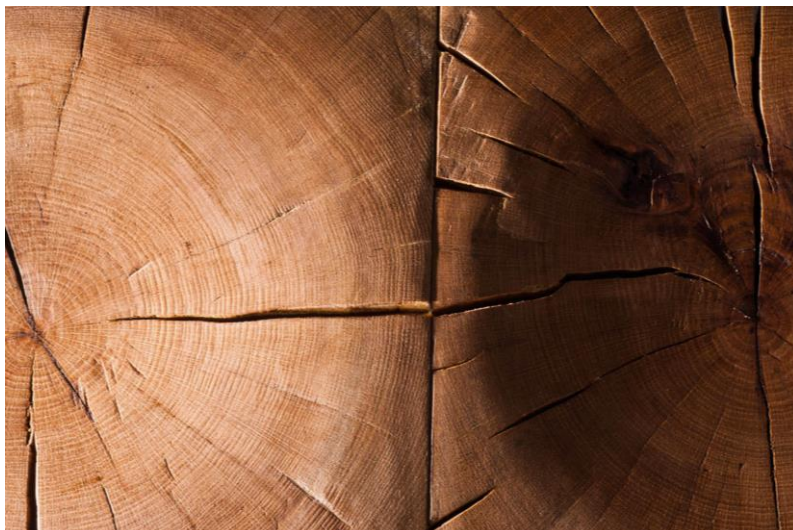
90x30x45cm

Approximate weight

45kg

Technical description

A solid oak bench made from vertical sections of a oak trunk and connected by a series of underside wood wedges. The upper part of the sections is slightly concave to provide comfort.



Product name 4

Sedis unum

Dimensions

32x32x42cm

Approximate weight

30kg

Technical description

A solid oak stool made from a vertical section of a oak trunk, reinforced by a series of wood butterflies and placed on top of four industrial style casters. The upper part is slightly concave to provide comfort.



Product name 5

Branch stool

Dimensions

35x35x45cm

Approximate weight

45kg

Technical description

A solid walnut and rolled steel stool made from a vertical section of a walnut trunk, and supported by a thick metal base.

